



### Apoi Sanso hotel

This resort hotel conveniently located for climbing Mt. Apoi has 19 guestrooms. Its large communal bath with mineral deposits from Futamata Radium Hot Spring is open to the public as well (adults: 500 yen).  
Email : [samani@apoi-sanso.co.jp](mailto:samani@apoi-sanso.co.jp)  
Tel. : +81-146-36-5211  
URL : <http://www.apoi-sanso.co.jp/>



### Apoi-sanroku Family Park Campsite

This campsite at the foot of Mt. Apoi provides several amenities including running water, a covered camp kitchen and flush toilets. Small bungalows are also available.

Inquiries:  
Mt. Apoi Geopark Visitor Center  
Email : [apoi.gvc@iris.ocn.ne.jp](mailto:apoi.gvc@iris.ocn.ne.jp) Tel. : +81-146-36-3601



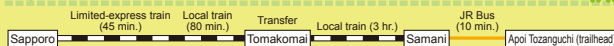
### Apoi-sanroku Park Golf Course

This golf facility has three sloping courses (27 holes) certified by the International Park Golf Association. It affords sweeping views of Mt. Apoi and the Pacific Ocean.

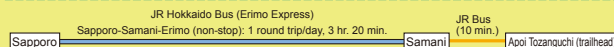
Inquiries:  
Apoi Sanso Hotel  
Email : [samani@apoi-sanso.co.jp](mailto:samani@apoi-sanso.co.jp) Tel. : +81-146-36-5211

## ACCESS

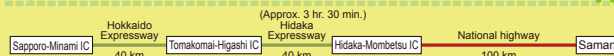
### By train



### By bus



### By car



## Mt. Apoi Geopark Visitor Center

Aza Hirau 479-7, Samani Town, Samani-gun,  
Hokkaido 058-0004

Email : [apoi.gvc@iris.ocn.ne.jp](mailto:apoi.gvc@iris.ocn.ne.jp)

Tel. : +81-146-36-3601

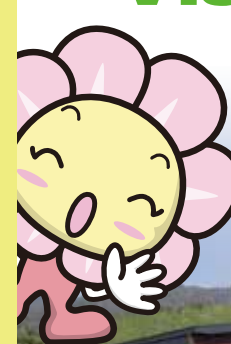
URL : <http://www.apoi-geopark.jp/>



- Opening period: April – November • Open every day during periods of operation
- Opening hours: 9:00 a.m. – 5:00 p.m. • Free admission



# Mt. Apoi Geopark Visitor Center



Samani Town, Hokkaido

