



### Apoi Sanso hotel

This resort hotel conveniently located for climbing Mt. Apoi has 19 guestrooms. Its large communal bath with mineral deposits from Futamata Radium Hot Spring is open to the public as well (adults: 500 yen).  
Email : [samani@apoi-sanso.co.jp](mailto:samani@apoi-sanso.co.jp)  
Tel. : +81-146-36-5211  
URL: <http://www.apoi-sanso.co.jp/>



### Apoi-sanroku Family Park Campsite

This campsite at the foot of Mt. Apoi provides several amenities including running water, a covered camp kitchen and flush toilets. Small bungalows are also available.

Inquiries:  
Mt. Apoi Geopark Visitor Center  
Email : [apoi.gvc@iris.ocn.ne.jp](mailto:apoi.gvc@iris.ocn.ne.jp) Tel. : +81-146-36-3601



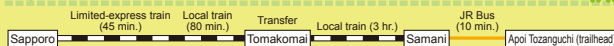
### Apoi-sanroku Park Golf Course

This golf facility has three sloping courses (27 holes) certified by the International Park Golf Association. It affords sweeping views of Mt. Apoi and the Pacific Ocean.

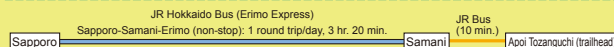
Inquiries:  
Apoi Sanso Hotel  
Email : [samani@apoi-sanso.co.jp](mailto:samani@apoi-sanso.co.jp) Tel. : +81-146-36-5211

## ACCESS

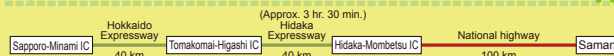
### By train



### By bus



### By car



## Mt. Apoi Geopark Visitor Center

Aza Hirau 479-7, Samani Town, Samani-gun,  
Hokkaido 058-0004

Email : [apoi.gvc@iris.ocn.ne.jp](mailto:apoi.gvc@iris.ocn.ne.jp)

Tel. : +81-146-36-3601

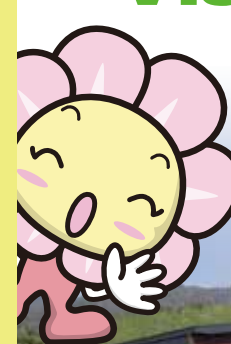
URL: <http://www.apoi-geopark.jp/>



- Opening period: April – November • Open every day during periods of operation
- Opening hours: 9:00 a.m. – 5:00 p.m. • Free admission



# Mt. Apoi Geopark Visitor Center



Samani Town, Hokkaido





# Information center for learning about and enjoying the geology, ecology and people of Samani

**Mt. Apoi Geopark Visitor Center serves as a hub facility for Mt. Apoi Geopark. It provides a wide range of information on Samani's geology, natural environment, history and culture, and on local climbing opportunities. Requests to stay at Apoi-sanroku Family Park Campsite can also be made there.**

## Topographical model of Mt. Apoi Geopark (Samani)

Mt. Apoi Geopark

This 3D topographical model covering almost the whole area of Samani exhibits a contrast in terrain between the town center to the west and the Apoi Mountains to the east, and also highlights local geosites.



## Samani Landscape Panels and Dioramas

Earth Science Zone

The Earth Science Zone highlights peridotites and other local features of Mt. Apoi. In its center are displays of dioramas and panels depicting Mt. Apoi, Oyako-iwa Rocks and other Samani landscapes. This zone is the ideal place to learn about how local landscapes formed.



## Diorama of Alpine Flora on Mt. Apoi

Nature, History and Industry Zone



This diorama reproducing flower fields near Umanose (the western ridge of Mt. Apoi) showcases the typical beautiful blooms seen in each season.



## Peel Specimen of a Fault

Earth Science Zone

This specimen is actually from the Hidaka Main Thrust in Mt. Apoi Geopark, where two tectonic plates in eastern and western Hokkaido once collided.



## Alpine Flora Calendar

Nature, History and Industry Zone



This rotating drum showcases the blooming seasons of flowers that open in succession on Mt. Apoi over a period of around six months. Rotate the drum to see flowers that bloom in each season.

## Tunnel from the Meiji Period

Nature, History and Industry Zone

This cross-section represents a tunnel dug in the Meiji Period (1868 – 1912) in what is known today as the Hidaka Yabakei area.



## Areas with a wealth of things to see!



Horoman peridotite commentary panels



Mt. Apoi climbing guidance and information



Video Area



Alpine flora commentary panels



Historical commentary panels



Industrial commentary panels